

DAY 07

MUMBAI-PUNE-PANCHGANI

Breakfast at the hotel.

Morning drive to Panchgani (310 kms/7 hours) **enroute lunch at Farhang Irani's (Freddie's best friend and band member in school) 'Bounty Sizzler ' Restaurant.**

Panchgani, the town in the midst of five hills, is an eternally beautiful hill station, a favourite escape clause for the Mumbai-weary. Panchgani is perennially fresh and inviting; its bracing climate complements the verdant surroundings. Flanked by tableland and craggy cliffs, Panchgani is 1334 m, just 38 m lower than Mahabaleshwar

On arrival check-in at: **HOTEL IL PALAZZO (HERITAGE)**

Afternoon visit Table Land and Bazaar.

Overnight stay at Hotel.



DAY 08

PANCHGANI

Breakfast at the hotel.

Full day trip to Mahabaleshwar (20 kms from Panchgani)

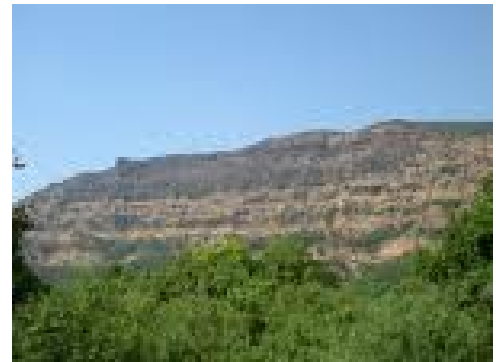
Mahabaleshwar

This popular hill station was the summer capital of the Bombay presidency during the days of the Raj. It has pleasant walks and good lookouts, and the area has interesting historical connections with Shivaji. The station was founded in 1828 by Sir John Malcom.

As with most hill stations, Mahabaleshwar closes up tight for the monsoon season (mid-June to mid-September). Local buildings are clad with kulum grass to stop them being damaged by the torrential rain -an unbelievable six meters (around 235 inches) of rain falls during this time.

The small Venna Lake, about four km from Mahabaleshwar, has boating and fishing facilities. The Krishnabai, or Panchganga (five streams), Temple is said to contain the springs of the Krishna, Veena and Koyana rivers. Freddie and school buddies would often bike down to Mahabaleshwar on weekends and be back in school for supper at 7:15 p.m. His love for cycling could have later inspired him to record, "I want to ride my bicycle" with his band Queen.

Overnight stay at Hotel.



DAY 09
PANCHGANI-MUMBAI-ABROAD

Breakfast at the hotel.

St.Peter's School Tour Schedule. Duration 4.5 hours:

0730 hrs : The school tour guide will join the fans at the hotel to partake of breakfast at 7.30am.

0830 hrs :The tour transport leaves for school to commence the tour at 8.45 am.

Through an interesting commentary the fans will be conducted around the following places on the school's 60 acre lush campus.

Assembly Hall - St.Peter's Church - 'Hectics' Band Room - Music Room - Gymnasium - Art Room - Barber Shop - Tuck Shop - School Playgrounds (3 levels - Upper field - Middle Field - Lower field , which is overlooking the Sayadri mountain valley with a breathtaking view) - Classroom - Dormitories (Rhodesia House - Albert House - Flora House - Lawrence Villa) - Hospital - Library - Computer Room (although not around Freddie's time).

Fans go back to the Assembly Hall for a photo opportunity with Freddie's piano and take a look at the school merchandise on sale display.

1215 hrs - Fans assemble with the school boys in the porch outside the dining hall and go in single file into the dining hall for lunch with the boys & school staff - to the accompaniment of 'Queen' recorded music in the background and later , after lunch a 'live' performance of a Freddie song by the school band.

After lunch drive from Panchgani to Mumbai (240 kms/5 hours)

Same night or early morning take the International Flight back home hopefully taking back cherished memories of Freddie's school & India.

Leave: Mumbai by International Flight

Validity : 01 Apr 2011 – 30 Sep 2011

(No tours accepted during St Peter's School Winter break for Christmas and New year between 05th December 2011 to 09th Jan 2012)

Cost per person (on DOB) : USD \$1375
Single room supplement : USD \$800

Discounts may apply for Groups of 4 or more.

Air fare supplement for Mumbai/Goa/Mumbai: USD \$345 per person

Cost includes:

- Accommodation for 8 Nights on the basis of Continental Plan (Room + Breakfast) at all places as per the itinerary mentioned above except at Panchgani which is on Breakfast and Dinner basis.
- Continental Lunch at **Farhang Irani's (Freddie's best friend and band member in school) 'Bounty Sizzler' Restaurant.**
- Please note the check-in time at all the hotels is 1400 Hours and check –out time is 1200 Hours.
- Arrival /departure transfer, sightseeing tours and surface journey by AC Indigo car for (02 pax),
- Services of Local English speaking Guide as per the itinerary mentioned above.
- Entrance Fees to the Monuments at all places as per the itinerary mentioned above.
- Assistance at the airport & hotels at the time of check-in & check –out
- All applicable taxes as on date

Cost Excludes

- Air Fare (Supplement given separately)
- Any meals apart from the one mentioned in the itinerary.
- Tips at the hotels /restaurants during the stay
- Nature of personal expenses such as telephone calls, laundry etc.
- Travel or Medical Insurance.
- Portages at the Airports and at the hotels at the time of Check – in & Check –out
- Tips to the local guide or Camera Fees at the monuments wherever applicable
- **Any services not mentioned in the inclusion**

Important Notes:

- Please take into account closure day(s) of monument(s) before you decide on a tour start date that will ensure viewing of all monument(s).
- Please advise full names of the clients along with the room configuration as same will be required by the hotel at the time of booking the accommodation.
- The above mentioned quotes are based on (Base Category) of room at all places, incase the clients wish to stay in higher category of room the same can be provided with additional supplement.
- The air fare mentioned above are based on the present rates floated by the airlines, once we receive go ahead from your end we will try to secure seats in NON REFUNDABLE fare which are quite lower than the rate of the day and published tariff. Please note the NON REFUNDABLE seats are subject to availability.

Terms & Conditions:

TOUR PAYMENT REQUIREMENTS: A non-refundable deposit of \$500 per person is required to confirm your booking. Final payment is due 60 days prior to departure.

CANCELLATION POLICY: If you must cancel for any reason, prior to the commencement of the tour the following cancellation penalties will apply:

- Upto 60 days \$500 per person.
- 59-46 days \$800 per person.
- 45-16 days prior to departure 50% non-refundable
- 15 days or less NON-REFUNDABLE.
- There will be no refund for no-shows.

DOCUMENTATION:

All non Indian passport holders need a valid Indian Visa from country of Origin. Passport must be valid for six months from the date of entry

INSURANCE:

We highly recommend Optional Comprehensive Insurance. This insurance covers hospital and medical insurance as well as baggage, flight and accident insurance. It also covers cancellation penalties if cancellation is due to medical reasons. Some limitations and exclusions may exist.